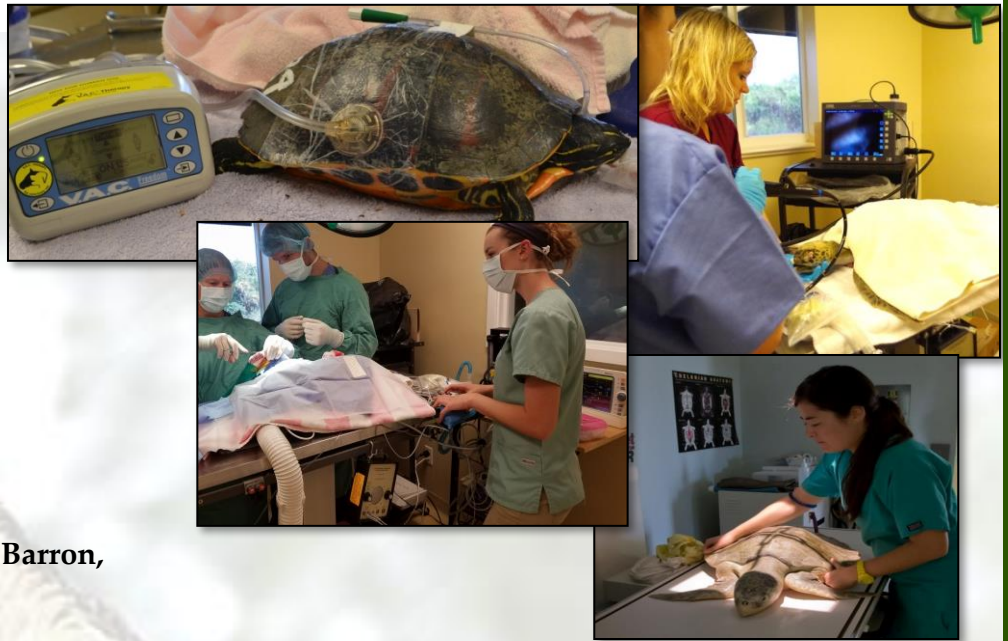




3883 Sanibel Captiva Road
Sanibel Island, FL 33957 USA

Hospital Director: Heather Wilson Barron,
DVM, Dipl. ABVP-avian



Wildlife and Conservation Medicine Veterinary Internship

Overview

Each year, CROW's nonprofit hospital and rehabilitation center provides care for ~ 4000 patients representing over 200 species of native and migratory birds, mammals and reptiles (including sea turtles) on Southwest Florida's Gulf Coast. Our mission is to advance the health, welfare, and conservation of wildlife through research, education, and cutting edge medical and surgical care.

CROW interns participate in daily hospital and rehabilitation center activities, working closely with boarded veterinary specialists, certified veterinary technicians and licensed rehabilitators. CROW's 4,800 sq ft hospital provides state-of-the-art equipment and facilities, including digital radiography, ultrasound, rigid & flexible endoscopy, tonometry, in-house lab (with iSTAT & Abaxis VS2), dedicated surgical suite and critical care units, electronic database, and enriched, welfare-oriented rehabilitation caging. Interns will learn to identify disease patterns, determine appropriate treatment protocols and have primary case management of patients in the hospital. They also learn cutting edge anesthesia and analgesia, soft tissue and orthopedic surgery, and necropsy techniques. In addition to clinical duties, interns participate in research and conservation projects, give case and journal club rounds, and help teach and coordinate students, staff and volunteers. The program is 1 year in duration. Two positions are available; one through the VIRMP that starts July 1 and one outside the match that starts January 1 every year.

Location

CROW operates on a 12.5-acre campus on beautiful Sanibel Island, Florida. The organization's hospital and visitor education center are located adjacent to the waterways and mangroves of the J.N. Ding Darling National Wildlife Refuge. The Gulf of Mexico is a short bike ride away and bicycles are provided. On-site housing, utilities, health care, licensure fees, and Continuing Education time and money are available as part of benefits package.

Deadline for Application is October 1, 2017 for the January 1, 2018-start position

Interested applicants should send a letter of intent, CV, and 3 letters of reference to hbarron@crowclinic.org